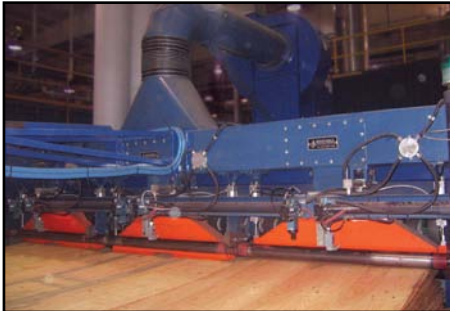


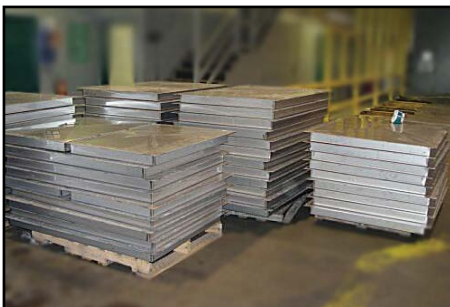
PRODUCT SHOWCASE



Westmill's low-maintenance Vacuum Feeder has variable suction that enables consistent and high speed dryer feed rates.



Westmill's Dryer Infeed Accumulator enables continuous feeding, resulting in increased dryer production and consistency.



Westmill's Retrofit Stainless Steel Dryer Floor can be installed over top of your existing concrete foundation, even if it is in poor condition.

	WEST-MILL PART NO.	CROSS REFERENCE NO.	PART APPLICATION	BORE SIZE
	B161	Coe 8212	Coe M-72 Drive Side Closed back	2 1/2"
	B162	Prentice C-30	Bolts to C006 (NW-64) Chain Holddown Replaces Moore RD-65 and RD-165	2 1/2"
	B163	Coe 10499	Coe M-62 Drive side	2 1/2"
	B261	Coe 10497	Coe M-62/M-72 Idle side	2 1/2"
	B361	Moore RD-165	For Moore Dryer with 12" vertical deck spacing (short casting)	2 1/2"
	B362	Moore RD-65 Prentice C-2	For Moore Dryer with 15" vertical deck spacing	2 1/2"
	B365	Coe PB-016048 8281RH	Coe: At door post Notched at right 8212	2 1/2"
	B366	Coe PB-016048 8281LH	Coe: At door post Notched at left 8212	2 1/2"
	B367	PB-034280 10895A	Coe: Drive side Raises top roll	2 1/2"
	B368	PB-034281 10893A	Coe: Idle side Raises top roll	2 1/2"
	B331	Raute Wood / Durand-Raute 4R708667	Raute Wood / Durand-Raute: Drive and idle side	1 3/4"
	B331-M	Raute Wood / Durand-Raute 4R50430GKK	Raute Wood / Durand-Raute: Drive and idle side	45mm (1.77")
	B363	Moore RD-162 Coe 619-2007-00	Drive and idle side	2"
	B369	Babcock 8588	Babcock: Screen Dryer	45mm (1.77")
	B370	Babcock 4-bolt	Babcock: Screen Dryer	45mm (1.77")
	B371	Moore RD-161 Coe 619-2006-00	Moore: Top Roll Guide	1 11/16"

CHAIN HOLDDOWNS & CHAIN WINDOWS

WESTMILL™

CHAIN HOLDDOWNS






Chain holddowns keep your dryer chain engaged to the roll sprockets and support the chain along its return path. Our chain holddowns are made from rugged cast iron.

WESTMILL™ also supplies mounting brackets for the chain holddowns, if required.

	PART NAME	WESTMILL PART NO.	CROSS REFERENCE NO.
	Chain Return Shoe	C001 C001-1*	Moore RD-7
	Return Shoe Mounting Clip	C002	Moore RD-7C
	Long Chain Holddown and Return	C003	Coe 8213
	Short Chain Holddown and Return for Coe M-62	C004	Coe 7907 Coe 10979
	Top Chain Holddown - long	C005	Coe 8228
	Prentice Chain Holddown - bolts to M-62 Rabbit Ear	C006	Prentice C30
	Chain Holddown and Return for Coe M-72	C007	Coe M-72
	Moore Dryer Chain Return Shoe	C012	Moore RD-145 Coe 619-2040-00

* Older style comes with casted mounting clip.

CHAIN WINDOWS

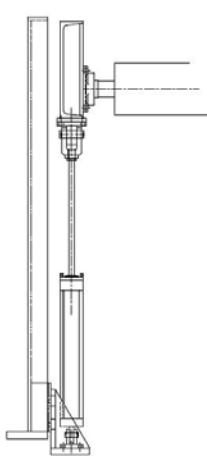
	PART NAME	WESTMILL PART NO.	CROSS REFERENCE NO.
	Single Chain Window (Prentice)	C008	Prentice C33
	Double Chain Window (Prentice)	C014	Prentice C34
	Double Chain Window	C009	PA-033855, CP010866
	Single Chain Window (out)	C010	PB-025130, CP010867
	Single Chain Window (in)	C011	PB-025131, CP010868

Westmill™ combines 37 years of industry experience with modern, efficient and cost-effective methods of manufacturing.

Our commitment is always to customer satisfaction and attention to detail. Add these up and you get Westmill's Seal of Satisfaction.

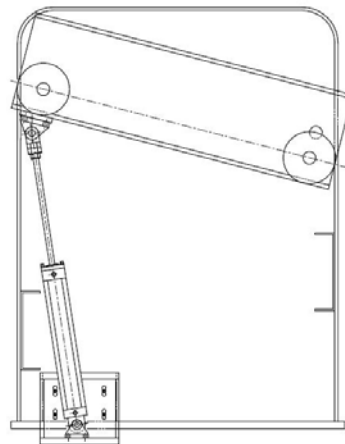
NO EXCUSES.

End view



8-inch profile

Side view



Bolts onto standard embedments

CAM TO HYDRAULIC CONVERSION

Westmill's Dryer Feeder Tipple combines precision positioning with quick and accurate feeding.



- bolts to existing embeds
- low profile – only 8 inches
- standard & custom retrofits

Westmill™ can provide cam-to-hydraulics retrofits for existing tipples.



Hook Tooth Sprocket



Reversing Hook Tooth Sprocket SP224

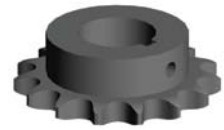
HOOK TOOTH & REVERSING (81X)

WESTMILL PART NO.	CROSS REFERENCE NO.	TEETH	HUB STYLE	BORE	KEYWAY	LENGTH THRU BORE	TOOTH WIDTH
SP222	Coe 389 Moore RD-3	7	C	1 1/2"	1/4"	2 1/4"	1"
SP321	Coe 389 Moore RD-3	7	C	1 1/2"	3/8"	2 1/4"	1"
SP111	MRJ Coe 8216 Moore RD-77	8	C	1"	1/4"	2 1/4"	1"
SP211	Coe 8216 Moore RD-77	8	C	1 1/4"	1/4"	2 1/4"	1"
SP221	Coe 8216 Moore RD-77 PB-015261	8	C	1 1/4"	3/8"	2 1/4"	1"
SP223	Coe 8216 Moore RD-77	8	C	1 1/2"	1/4"	2 1/4"	1"
SP224	Prentice C-9 Reversing Sprocket	8	C	1 1/2"	1/4"	2 1/4"	1"
SP322	Coe 8216 Moore RD-77 Narrow Tooth Width	8	C	1 1/2"	3/8"	2"	1/2"
SP323	Coe PC-018140 (M72 & M62)	8	C	1 1/2"	3/8"	2 1/4"	1"

RAUTE WOOD / DURAND-RAUTE (RC100)



WESTMILL PART NO.	CROSS REFERENCE NO.	TEETH	HUB STYLE	BORE	KEYWAY	LENGTH THRU BORE	TOOTH WIDTH
RAU-011	514-6017 Dryer Roll Sprocket	17	B	1"	1/4"	1 1/2"	0.692"
RAU-013	Raute Metric – 3-Sheet Dryer	15	B	25 mm	8 mm	1 1/2"	18 mm



DRIVE & IDLER (RC50)

WESTMILL PART NO.	CROSS REFERENCE NO.	TEETH	HUB STYLE	BORE	KEYWAY	LENGTH THRU BORE	TOOTH WIDTH
WEST-109	50B10 Idler Sprocket	10	B	3/4" Oilite Bushing	none	1"	0.343"
SP212	Drive Sprocket	15	B	1 1/4"	1/4"	1"	0.343"
SP213	Drive Sprocket	16	B	1 1/4"	1/4"	1"	0.343"
AET-001	50BB17H AG-2416 Idler Sprocket	17	A	5/8" Ball Bearing	none	0.72"	0.343"



DRIVE SPROCKETS (81X)

WESTMILL PART NO.	CROSS REFERENCE NO.	TEETH	HUB STYLE	BORE	KEYWAY	LENGTH THRU BORE	TOOTH WIDTH
SP730	RD-76 Moore NW-86	8	B	2 3/16"	1/2"	3"	7/8"
SP840	NW-87 Coe	8	C	2 3/16"	5/8"	3"	7/8"

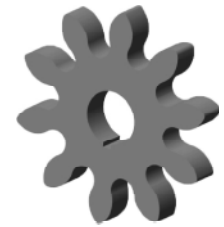


IDLER SPROCKETS (81X)

WESTMILL PART NO.	CROSS REFERENCE NO.	TEETH	HUB STYLE	BORE	KEYWAY	LENGTH THRU BORE	TOOTH WIDTH
SB400	RD-175A	8	B	1.775" Ball Bearing	none	3"	7/8"
SZ600	RD-175	8	B	2 3/16" Bronze Bushing	none	3"	7/8"
SZ221	Coe	8	C	1 1/4" Bronze Bushing	none	3"	7/8"

STAR GEARS

WESTMILL PART NO.	CROSS REFERENCE NO.	TEETH	HUB STYLE	BORE	KEYWAY	LENGTH THRU BORE	TOOTH WIDTH
S213	Moore RD-130	10	A	1 1/4"	1/4"	15/16"	13/16"
S302	Coe M-62 Jet	10	A	1 1/2"	none	1 1/4"	1 1/8"
S313	Moore RD-130	10	A	1 1/2"	1/4"	15/16"	13/16"
S312	Moore RD-2S	10	A	1 1/2"	1/4"	1 1/4"	1 1/8"
S323		10	A	1 1/2"	3/8"	1 1/4"	1 1/8"
S111		10	B	1"	1/4"	2 1/4"	1 1/8"
S201	Moore	10	B	1 1/4"	none	2 1/4"	1 1/8"
S211		10	B	1 1/4"	1/4"	2 1/4"	1 1/8"
S221	Moore RD-130	10	A	1 1/4"	3/8"	15/16"	13/16"
S222		10	B	1 1/4"	3/8"	2 1/4"	1 1/8"
S301	Moore, Prentice	10	B	1 1/2"	none	2 1/4"	1 1/8"
S311	Moore, Prentice	10	B	1 1/2"	1/4"	2 1/4"	1 1/8"
S324	Coe M-72 Cooler, 5" OD PC-079387	10	B	1 1/2"	3/8"	1 3/4"	1"
S322	Coe PC-045141 M-72	10	B	1 1/2"	3/8"	1 7/8"	1 1/8"
S322B	Coe RFP-R	10	B	1 1/4"	3/8"	1 7/8"	1 1/8"
S321	Coe PC-018139	10	B	1 1/2"	3/8"	2 1/4"	1 1/8"
S101-M	Raute Wood 3R403462	12	B	25 mm	8 mm	1.9"	1"
S101	Raute Wood / Durand Raute 3R708513	12	B	1"	1/4"	1.9"	1"



Feed Section Flat Star Gear S213



Hubless (A-style)



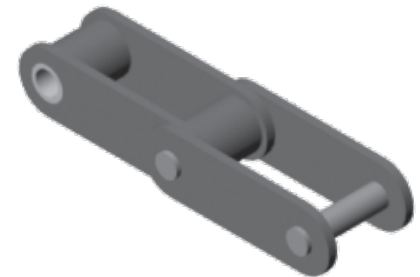
Standard (B-hub)

DRYER CHAIN (81X)

WESTMILL™ supplies various styles of 81X veneer dryer chain. 81X chain is also used on other material conveying machinery.

We offer several sizes of chain:

- 81X chain: straight side bar, bushed roller chain
- 81X-HD chain: Heavy duty. Straight side bar, bushed roller chain
- 81X-XHD chain: Extra heavy duty. Straight side bar, bushed roller chain
- Connecting links for all of the above chains



Controls & Automation Services



VENEER AND PLYWOOD PRODUCTION SPECIALISTS

PLC Services • Programming • Instrumentation
Integration • Electrical Design • Electrical Build

From interim assistance to full project management, we've got you covered.

Allen Bradley • Seimens • Emerson • FPGA • National Instruments • PAC NI • CompactRIO